

# envision



The quarterly update from CMS Enviro Systems

Issue 2 Q2 2009

## inside this issue

CMS do the double with two high profile award wins so far in 2009

CMS Aluminium completes £0.75M project at Denny High School

CMS meet 2016 compliance standards with U values down to 0.8

£1.5M windows project completed for North Glasgow Housing Association

In the spotlight: Interview with Stephen Anderson, CMS Design Manager

## Leading the way for sustainable manufacturing



[www.cms-es.co.uk](http://www.cms-es.co.uk)

# a double whammy

## We scoop two prestigious business awards

The most prestigious night in Lanarkshire's business calendar took place at Motherwell Concert Hall on the 27th February. CMS fought off tough competition in the form of Kwik Fit insurance Services and Controlled Therapeutics (Scotland) Ltd to secure first place at the North Lanarkshire Business Excellence Awards in the category of 'Best Performing Business (26 people and over)'.

The award is for businesses that have successfully grown their organisation through strong leadership and clearly defined strategic objectives and now operate with 26 employees or more.

CMS's Managing Director, Andrew Kerr, says "This award means so much to CMS, and without the continued support of both our Employees and much valued Customers, none of this would have been possible. So a BIG THANK YOU!"

CMS received recognition recently for their commitment to sustainability within their business model with a category win at the Fife Green Awards, at which CMS won 'Best Green Business for Waste'. They came in front of organisations such as SKY Subscriber Services and NHS Fife.

CMS's Managing Director, Andrew Kerr, said "Knowing that our ethical and sustainable outlook to our manufacturing processes has been recognised is so rewarding in itself. The associated cost savings in our approach means that everyone benefits for the way we look at and carry our processes. And just lastly to a massive Thank You to everyone who has played a part in contributing to our outlook, especially our customers and wish to say a special thank you to Fife council's Building Services team for the support and helping us to achieve our recycling targets and goals."

CMS has a policy of 100% recyclability of its customers' waste products, and its own in-house waste. This is processed at the company's recycling facility in Cumbernauld and Fife. Co-extrusion of weather-seals and gaskets plays a major part in the 100% recyclability of CMS products.



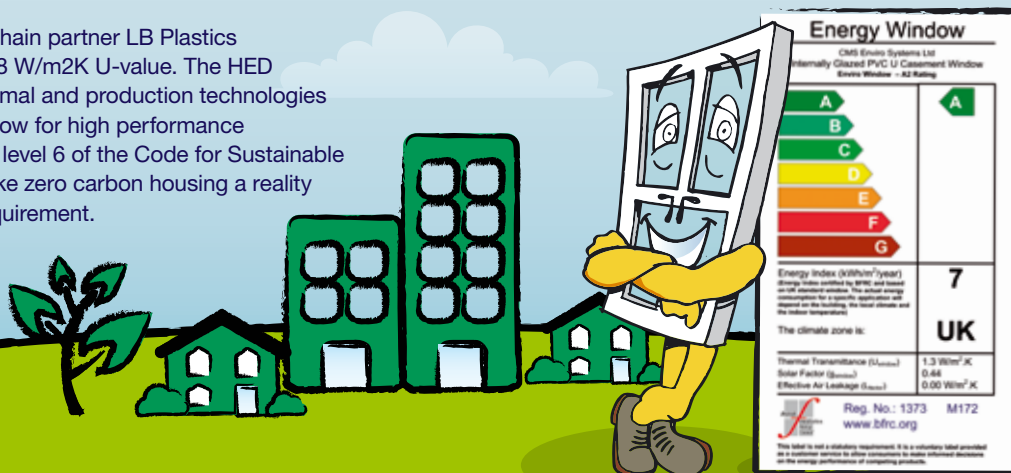
Winner  
LANARKSHIRE  
Business  
Excellence  
Awards  
2009



## tomorrow's windows today

### CMS meet 2016 compliance standards with U values down to 0.8

In conjunction with their supply chain partner LB Plastics CMS now offer a window with 0.8 W/m<sup>2</sup>K U-value. The HED window brings together new thermal and production technologies to deliver a super-insulating window for high performance applications. It is proven to meet level 6 of the Code for Sustainable Homes and therefore help to make zero carbon housing a reality today, in advance of the 2016 requirement.



# CMS Aluminium completes £0.75M project at Denny High School



Client - Falkirk Council  
Contractor - Ogilvie Construction  
Architect - JMA Architects  
Cost - 28m  
Completion Date - February 2009



**“CMS commitment to ensuring the project was completed on time and budget is testament to their attitude throughout – offering solutions to potential problems was a real strong point”**

As part of the Falkirk Schools Gateway comprising of 4 new build secondary schools within the district, CMS were appointed by Ogilvie Construction Ltd as aluminium curtain walling, window and door contractor.

Construction of the new Denny High school - built in the Herbertshire Playing fields of the on the eastern outskirts of Denny – started in early October 2006 with the eagerly anticipated handover completed in February of this year, on time and budget.

Our scope of work incorporated design, manufacture and installation of an ambitious glazing workpackage to be completed within a programmed work period of 28 weeks.

The specification integrated the use the Senior Aluminium System SMR 900 curtainwalling system, SPW300 windows and SD, SFG door and glazing systems.

Working within an enthusiastic design team including JM Architects and Faber Maunsell engineering consultants, CMS worked tirelessly to meet the demands on of both aesthetics and structure, on occasion utilising expertise's and experience to maximise system capability.

This was evident in the production of the main entrance feature curtain, spanning approx. Spanning 55m in width and 11m tall over three storeys, the design accommodated numerous obstacles such as projecting flash channels, protruding steel sections, shaped glazing and glass to glass faceless corners.

Overall the £0.75m project was welcomed with great success internally, through the sheer commitment of staff involved and externally via client Ogilvie construction in particular Construction manager Stuart McPherson, underlining this with his praising comments -

“CMS commitment to ensuring the project was completed on time and budget is testament to their attitude throughout – offering solutions to potential problems was a real strong point”.

# a bright future

## We're setting the benchmark with our commitment to developing sustainable products and the environment

By its very name CMS Enviro Systems Ltd demonstrates that it takes its environmental responsibilities seriously. The environmental activities of our business is not only restricted to those associated with our manufacturing and administration processes but also to the type of products we provide and the added value services we are developing for our client base and beyond.

As a business we are also at the forefront of working with our profile supplier and the PVC industry as a whole to introduce the Homogenous Energy Dynamics (HED) the UK's first ZERO carbon home compliant window system (0.8u value). This is being publicised as "tomorrows window today" and illustrates the PVC industry commitment to introduce energy conscious products in keeping with the Code for Sustainable Homes requirements.

The battle against climate change is constant and buildings are a major CO2 contributor. To ensure our buildings are energy efficient in the long term and created using materials that have

not cost the earth to produce, product selection and specification must take into account the whole life cycle and consider post-use disposal.

Unlike other materials used in window frames, PVC performs extremely well in terms of sustainability. PVC is extremely resource-efficient in its manufacture and in the case of CMS, creates windows that offer excellent thermal performance over a long lifetime. In addition, when PVC frames are eventually replaced, they can be easily collected and recycled compared with other materials.

Recycling waste materials without compromising the technical performance of the end product is a valuable achievement. In the PVC industry, both the end of life and manufacturing process waste materials, are routinely recycled to eradicate any unnecessary waste.



# Double glazing boost for homes of 400 families

## £1.5M windows project completed for North Glasgow Housing Association

CMS have installed double glazing in the homes of more than 400 tenants in as part of North Glasgow Housing Association's Planned Maintenance Programme.

The Association invested over £1.5 million fitting the new windows in a total of 416 homes in the Carron area of Springburn. Multi-storey flats and tenements have been improved through the project.

As well as the installation of double glazed windows, veranda areas in three eight-storey tower blocks in Carron Crescent have also been enclosed to help increase the energy efficiency of homes. Completion of the project will help ensure that the homes meet the Scottish Housing Quality Standard (SHQS) - rigorous Scottish Government quality targets for houses in the social rented sector.

The work follows tenants' decision to transfer to the Association from Scottish Homes in 2001. As part of the transfer the Association pledged to invest £28 million improving homes over a 30-year period.

Chief Executive of North Glasgow Housing Association, Robert Tamburrini, said: "Once again the Association has delivered on its promises to tenants by installing these new windows in over 400 homes.

Completion of the works will make a very real difference to tenants by ensuring they have warm, dry and safe homes. By making the homes more energy efficient it will also make them more cost effective to heat."

Dave MacGregor, Director of CMS Enviro Systems, said:

"The positive feedback received from this project is a testament to North Glasgow Housing Association, its tenants and CMS."



"We are delighted to have worked in partnership with CMS Enviro Systems to deliver this project. Feedback from tenants on the quality of the work has been excellent to say the least."

Robert Tamburrini  
Chief Executive, North Glasgow Housing Association

# experience counts

## Plans for CMS Skills Academy get the green light

CMS are committed to investing in their Staff and plan to augment their existing commitment by building their own training centre attached to their manufacturing plant in Cumbernauld.

Ian Patrick, H R Manager, commented "When your staff have the right skills to do the best job, your productivity and competitiveness improves. Trained staff improve their contribution in the workplace, have more confidence in their abilities and more pride in their skills. This leads to a better quality of service for customers."



# CMS profile

## Stephen Anderson Design Manager

In this edition of 'envision' we chat with newly appointed Structural Engineer Stephen Anderson about his new role as design manager - revealing how he has adapted to life within the façade industry, and what the future holds for him and the design department here at CMS.

Stephen Says,

Since joining CMS in a full-time capacity over the last 5 months I have found it a testing exercise adapting to life in the construction side of the industry, having previously work for a multinational engineering consultancy (Halcrow Yolles), and being office based.

Finding myself at the raw edge of design in manufacture has at times been tricky. In the past I tended to be at the other side of the table specifying and checking design for manufacturers without a full understanding the complexities of the systems or the practicalities of their design. This was all too often overlooked and assumption based due to being one piece of a large puzzle.

Gaining knowledge of the systems we employ and the effect they have on a building structure has prompted me to push façade design from a different angle. I now firmly believe that we should be early entrants at main design stage of a building, not only from a commercial perspective with the percentage build cost of inefficient façade design being huge, but in the interests of structural integrity.

Technical design input at this stage will allow seamless construction details especially with the placing of secondary steelwork if required and weathering options. This is especially useful if primary/secondary steel can be set-out/placed to offer a dual role - primarily supporting building elements but also, without adverse effect being able to support façade elements thus limiting costly and often non-aesthetically pleasing connections and additional steelwork.

Architecturally it is also of benefit to allow the limitations of the systems/glass to be fully understood and practicalities of fitting to be established.

If we can push this in the right direction I see CMS being manufacturer of choice as the professional service we provide will notably benefit every project in which we are involved.

Overall I am thoroughly enjoying my time here and look to embrace the challenge ahead, as part of our experienced technical team I feel the shear willingness to perform will continue pushing CMS to the forefront of the industry.



Head Office:  
3 Mid Road, Blairlinn Ind Estate,  
Cumbernauld G67 2TT

T:01236 729 821 F:01236 781 583  
[www.cms-es.co.uk](http://www.cms-es.co.uk)

For more information on CMS products or the range of services we offer call Dave MacGregor on 01236 729 821 or email [davem@cms-es.co.uk](mailto:davem@cms-es.co.uk).

